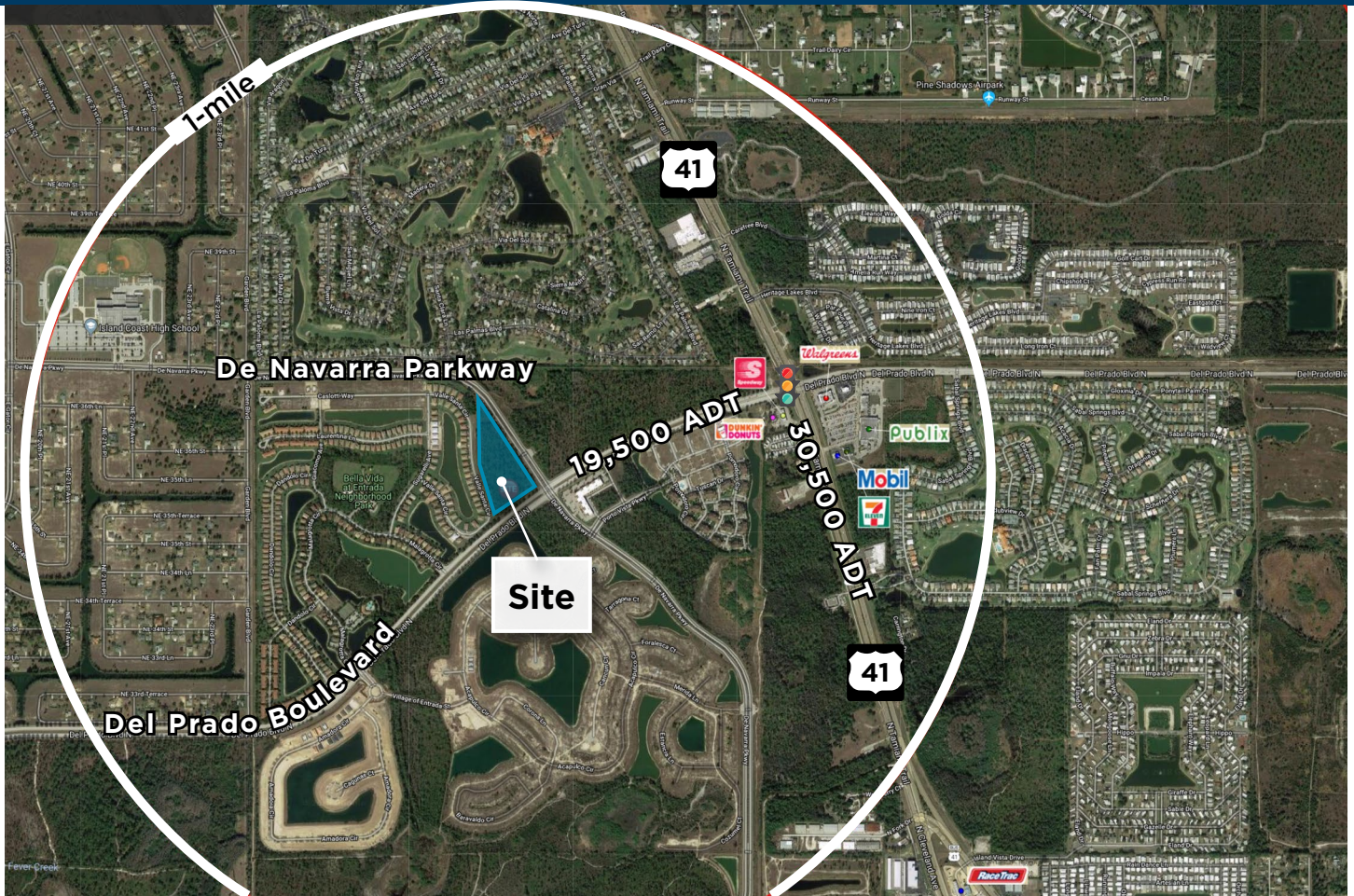


Entrada Outparcels

±4.52 acres | Zoning: Commercial C-1 | Cape Coral, Florida



Key Demographics

Population	3-Mile Radius	Median Age	51 Years
Current Estimated Population	32,763	Daytime Demographics	
Projected Population (5 Years)	36,154	Number of Businesses	889
2010 Census Population	25,670	Number of Employees	5,008
Households		Total Daytime Population	22,389
Current Estimated Households	15,588	Consumer Expenditures	
Projected Households (5 Years)	16,487	Total Retail Expenditures	\$349.44 M
2010 Census Households	12,270	Per Household per Month	\$1,868
Income			
Average Household Income	\$56,433		



Location

3560 De Navarra Parkway,
Cape Coral, Florida
NWC Del Prado & De Navarra
(26.7215886, -81.9162286)
Click to navigate to Google Maps

Property Contact

Massimo Rastrelli MRastrelli@castoinfo.com
941.552.4336 Direct

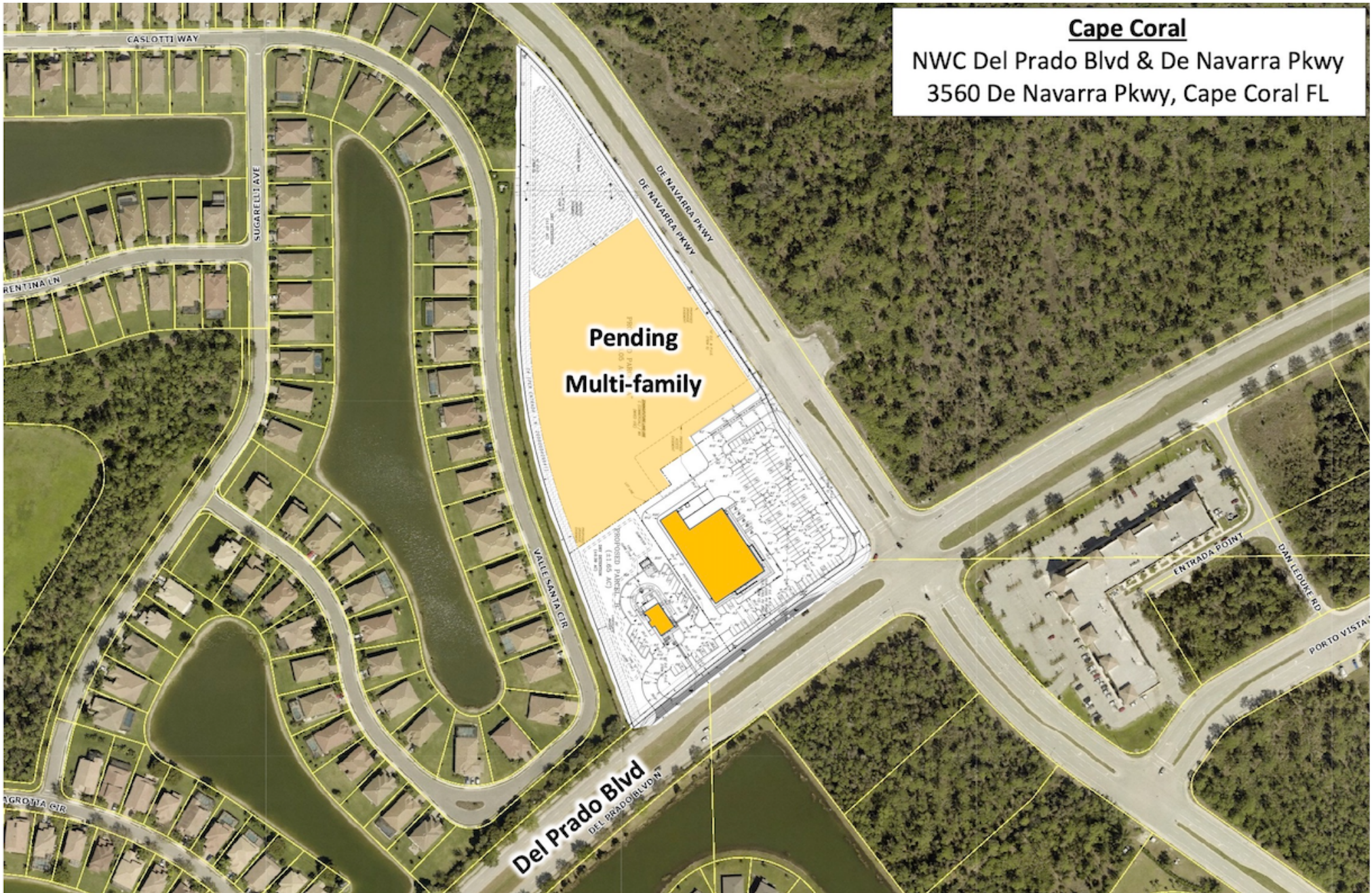


Inspired ideas. Integrated real estate solutions.

castoinfo.com
6/7/2021 | feo-overview

Entrada Outparcels

±4.52 acres | Zoning: Commercial C-1 | Cape Coral, Florida



Cape Coral
NWC Del Prado Blvd & De Navarra Pkwy
3560 De Navarra Pkwy, Cape Coral FL