

Pinebrook Medical Center

Corner of Pinebrook Road and Curry Lane, off Interstate 75 | Venice, Florida



A brand-new, state-of-the-art facility in Venice, FL. All the space in the building is allocated and leased to healthcare professionals. Ideally located at the corner of Pinebrook Road and Curry Lane, adjacent to the planned Sarasota Memorial Hospital.

Construction start: October 2021

Completion: Q4 2022

Property Contact

Aaron Ruben ARuben@castoinfo.com

941.552.2704 Direct



Location

Corner of Pinebrook Road and Curry Lane, off Interstate 75, Venice, Florida (27.1320751, -82.4194552)
Click to navigate to Google Maps

Traffic Counts

Pinebrook Rd: 6,428
Laurel Rd: 15,006



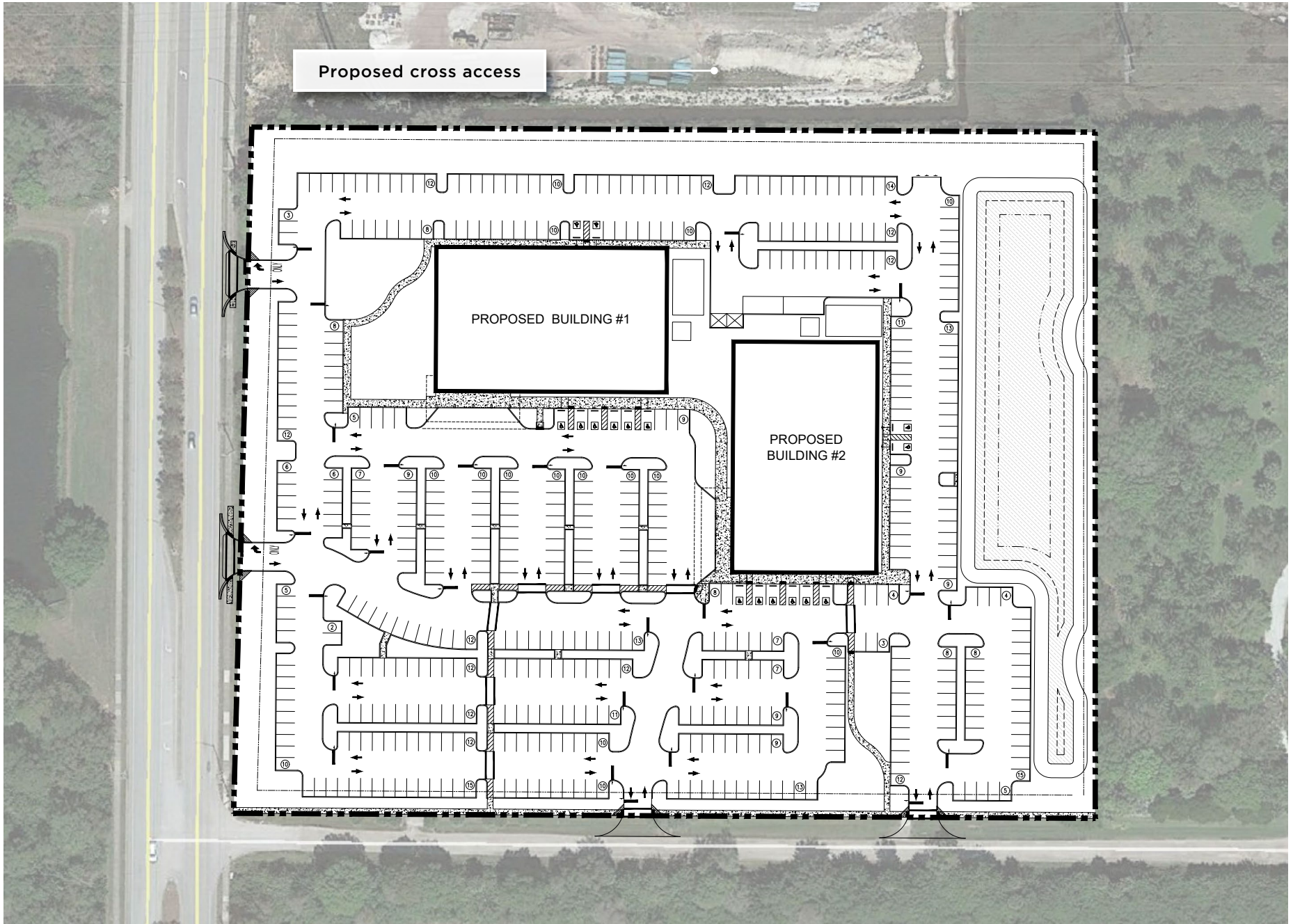
Key Demographics

3-Mile Radius	
Current Estimated Population	32,108
Projected Population (5 Years)	34,531
Current Estimated Households	17,257
Average Household Income	\$86,365
Households Earning More than \$50K	58.2%
Median Age	64 years
Daytime Population	39,979
Businesses	2,376
Total Retail Expenditure	\$516.44 M
Total Retail Expenditure per Household per Month	\$2,494

Pinebrook Medical Center

Corner of Pinebrook Road and Curry Lane, off Interstate 75 | Venice, Florida

Site Plan



Pinebrook Medical Center

Corner of Pinebrook Road and Curry Lane, off Interstate 75 | Venice, Florida

Sarasota Memorial Plan

